

Hudson Falls Powerhouse and Allen Mill Update



Allen Mill Deconstruction

- Complex building history and layout
 - Built in the 1800s - paper manufacturing facility
 - River water conveyed through channels (raceways) to generate power
 - Complex history of environmental releases and cleanup work
- Access to the building obtained in 2023
 - Some areas remain restricted due to deteriorated conditions
- Extensive pre-design investigation work conducted in and around the Allen Mill to support deconstruction approach



Allen Mill Deconstruction



Allen Mill Pre-Design Investigation Work

- Multiple rounds of sampling conducted in 2023, 2024 and 2025
 - Building materials (roof, ceiling, floors, limestone block, brick/concrete walls, mortar)
 - Materials in equipment (tanks, turbines)
 - Various debris, including sediment and soil
 - Standing water
- Air conditions – baseline evaluations
- River plunge pool and Baker's Falls – baseline sampling
- Groundwater investigations near the edge of the river



Limestone Block Wall Sampling



Inspection of Baker's Falls



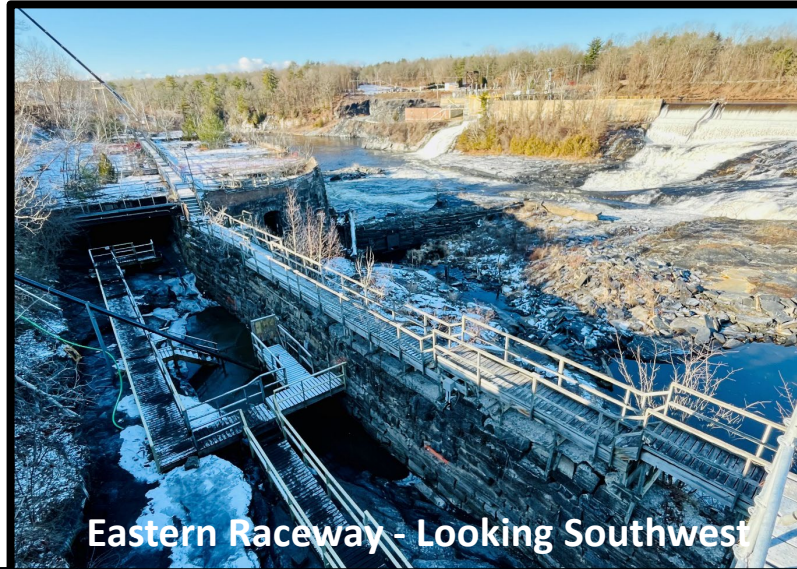
Debris Pile in Lower Mill



Lower Raceway (Standing Water)

Eastern Raceway Cleanout

- 184 tons of PCB-impacted material removed and disposed off-site in December 2024
- Community air monitoring and river monitoring conducted during work
- Ongoing collection of water from north end of eastern raceway



Eastern Raceway - Looking Southwest



South End of Raceway



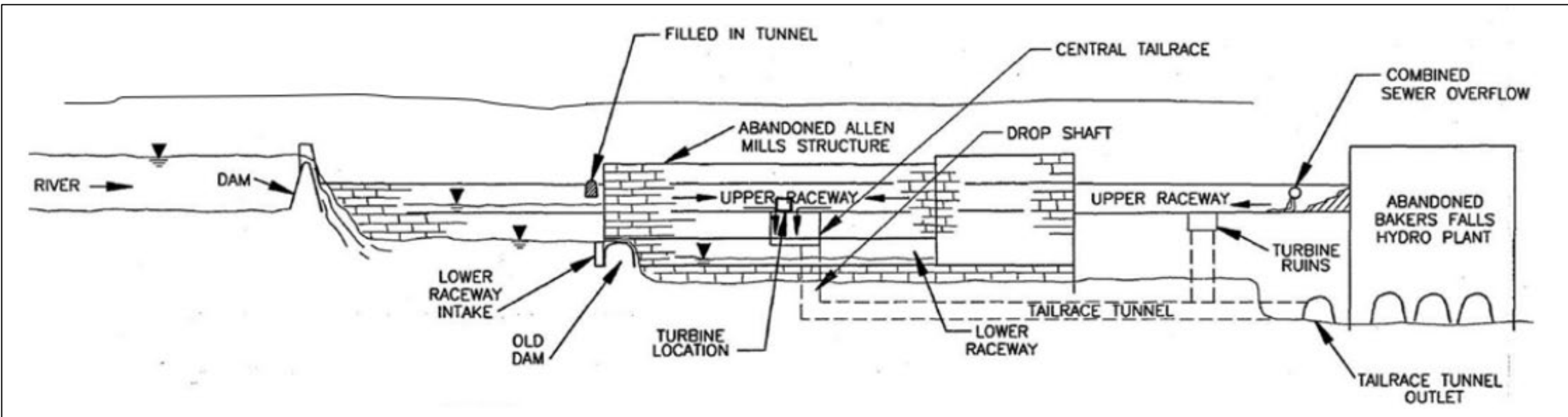
Covered Portion of the Raceway



North End of Raceway

Tailrace Tunnel

- The tailrace tunnel runs under the Allen Mill and conveyed water from the upper raceway to the river
- Work scheduled to begin in July 2025 under NYSDEC to evaluate access and make improvements to the tunnel for future inspections and sampling, if possible

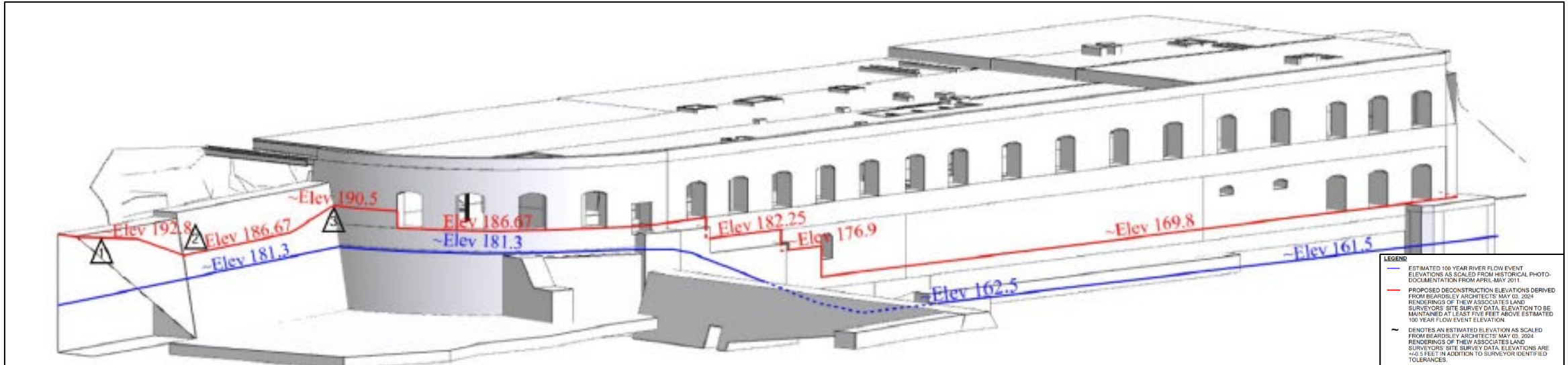


Allen Mill Design

➤ Deconstruction design is underway

➤ Challenges/Considerations:

- Partial removal of exterior wall facing Baker's Falls
- Potential support/bracing of remaining exterior wall
- Potential reuse of certain building material onsite and/or inside the building footprint
- Sequence and approach for handling/staging removed materials given accessibility challenges
- Consideration of future access needs for inspections or remedial work under NYSDEC



Allen Mill – Looking Ahead

- Ongoing pre-design work
 - Tailrace tunnel access and inspection/sampling (if possible)
 - Further sampling of limestone block, debris, soil and wooden walkways to support the design
 - Continued baseline sampling – Baker's Falls, river plunge pool
- Design scheduled to be submitted June/July
 - Including environmental requirements and monitoring plans
- Contractor procurement (underway)
- Deconstruction scheduled to begin in 2026
- EPA continues to coordinate closely with NYSDEC
 - Consideration of future access needs related to the Hudson Falls Plant site



Powerhouse Status and Next Steps

- Collection of water in the east trench is ongoing
- Planning underway for further stabilization of the north and south walls
 - Objective is to provide safe working conditions on the floor slab for future work (continued trench operations and tailrace tunnel access)
 - Limestone block to be placed within safety barricades on the Powerhouse floor slab
 - Scheduled for late 2025

